

*Driving Energy*



**Valves**



**RINGO VALVULAS** 



Since its establishment, Ringo Válvulas has designed and manufactured its own cast and forged valves. Our experience over 30 years on the valve industry is the key of our success and recognition, and we are proud to announce that we have reached the highest level in technology and production of valves.

Ringo Válvulas is located in the Industrial State of Empresarium, Zaragoza, Spain, and offers a wide range of valves, to all recognised standards (ASTM, DIN, API, BS), in a wide variety of materials (carbon steels, alloy steels, stainless steels, duplex, monel, etc) designed for the chemical and petrochemical, oil and gas processing, water treatment and energy generation plants, among which nuclear industries occupies an important place.

Modern equipment for manufacturing, inspection and testing guarantees the conformity to the most stringent specifications.

Ringo Válvulas is totally committed to Quality, and a smooth integration of all departments with the Quality Assurance and Quality Control Procedures. This guarantees that all our products are designed, manufactured and delivered in accordance with customer requirements. Our main goal is to offer a high quality product and service to ensure a high degree of satisfaction and fidelity of our customers.

## ■ OUR SCOPE OF SUPPLY

■ Ball Valves

■ Gate Valves

■ Globe Valves

■ Control Valves

■ Check Valves

■ Butterfly Valves

■ Plug Valves

■ Special Valves

## ■ OUR ASSETS

Over 30 years experience in the world of valves.

We have our own technology.

We have our own marketing and sales service.

We can offer complete project solution.

We can offer whole world coverage.

We manufacture under all standards.

We can offer materials for the most stringent service conditions.



■ **OUR INTERNATIONAL ACREDITATIONS:**



ISO 9001:2008 by LRQA



ISO 14001 by LRQA



OHSAS 18001 by LRQA



API 6A-0729  
Licence Nr. 6A-0729



API 6D-0495  
Licence Nr. 6D-0495



API 6DSS-0038  
Licence Nr. 6DSS-0038



CE stamp holder  
PED 97/23/CE



ATEX stamp holder



GOST certificate



N



NPT



Certified by TÜV according to EN ISO 3834-2  
Certified by TÜV according to AD 2000-Merkblatt HP 0, TRD 201  
Certified by TÜV according to AD 2000-Merkblatt W 0/A4



Industrie Service



ROSTECHNADZOR  
Certificate



Inspection Type Certificate  
issued by INSPECTA nuclear



ISCIR Certificate of  
authorization

## ■ BALL VALVES

- Design to API 6D, API 6A, API 6DSS, ANSI B16.34 and BS5351.
- Bolted construction and fully welded design.
- Side entry and top entry.
- Trunnion mounted and floating ball designs.
- Soft seated and metal seated.
- Underground and above ground.
- Cryogenic design.
- 3 and 4 ways.
- Manual, electric, pneumatic and hydraulic actuated.
- Full range of body / trim materials.
- Sizes up to 56".
- From class 150# up to 2500#.



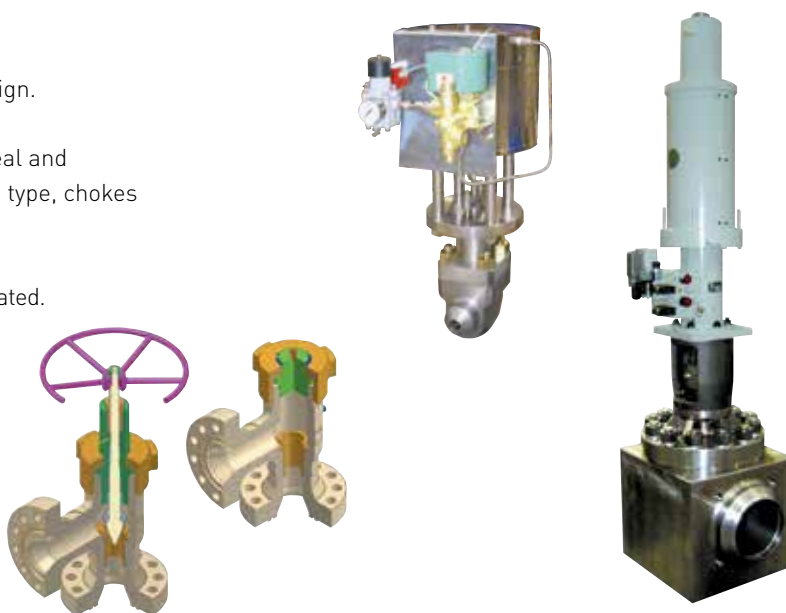
## ■ GATE VALVES

- Design to ANSI B16.34, API 600, API 602 and BS 1414, API 6D, API 6A.
- Bolted bonnet and pressure seal designs.
- Cast and forged construction.
- Wedge type or parallel slide design.
- Through conduit and expanding gate design to API 6D and API 6A.
- Extended bonnet for cryogenic applications.
- Manual, electric, pneumatic and hydraulic actuated.
- Sizes up to 72".
- From class 150# up to 4500#.



## ■ GLOBE VALVES

- Design to ANSI B16.34, API 600, API 602 and BS 1873.
- Bolted bonnet and pressure seal designs.
- Cast and forged construction.
- Straight pattern, "Y" pattern and angular design.
- Plug, parabolic and ball disc.
- Special designs: zero stem leakage (bellowseal and membrane type), stop check type, diaphragm type, chokes to API 6A.
- Extended bonnet for cryogenic applications.
- Manual, electric, pneumatic and hydraulic actuated.
- Full range of body / trim materials.
- Sizes up to 48".
- From class 150# up to 4500#.



## ■ CONTROL VALVES



- Design to ANSI B16.34., ISA 75.01.01, ISA 75.02, ISA 75.17, ISA 75.23, etc.
- Top guided and cage guided design.
- Balanced and unbalanced design.
- Cast forged construction.
- All kind of trims (anticavitation, low noise, multistage pilot trim, etc.) to cover all kind of application.
- Pneumatic (own range of diaphragm actuators), hydraulic and electric.
- Sizes up to 36".
- From class 150# up to 4500#.



## ■ CHECK VALVES

---

- Design to ANSI B16.34, API 600, API 6D, API 6A, API 602 and BS 1868.
- Bolted bonnet and pressure seal design.
- Cast and forged construction.
- Swing check, piston check, ball check, tilting disc and dual plate design.
- Emergency assisted check valves for Power Plant extraction lines.
- Full bore check valves to API 6D & 6A.
- Full range of body and trim materials.
- Sizes up to 64".
- From class 150# up to 4500#.



## ■ BUTTERFLY VALVES

---



- Design to AWWA and API Standards.
- Single, double and triple eccentric.
- Ends: Wafer, lug, RF, and FF.
- Sizes up to 120".

## ■ PLUG VALVES

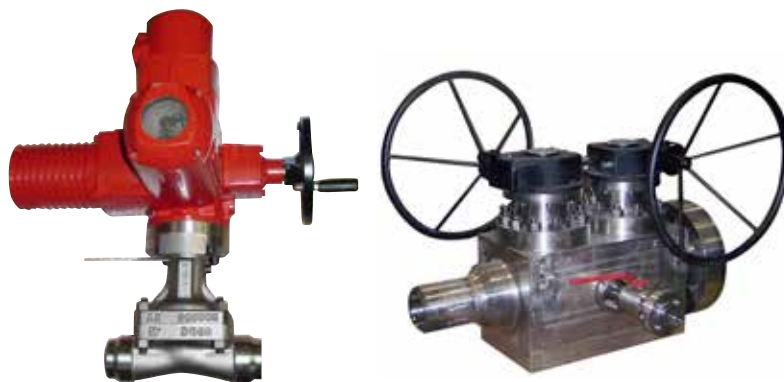
---

- Design to API 6D and API 599.
- Self lubricated type.
- Inverted type pressure balance design.
- Full, regular and ventury port.
- Full range of body and trim materials.
- Sizes up to 24".
- From class 150# up to 1500#.



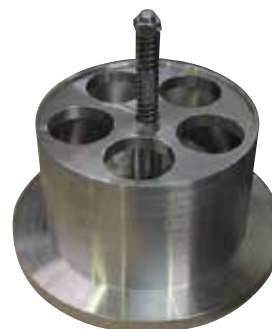
## ■ SPECIAL VALVES

- Nuclear valves.
- Double and single block and bleed valves.
- Subsea valves.
- Excess flow valves.
- Diaphragm valves.
- Zero steam leakage valves.
- Fully overlay valves.
- High integrity pressure protection system (HIPPS).



## Our standards and design codes

API	American Petroleum Institute.
ASTM	American Society for Testing and Material.
ASME	American Society of Mechanical Engineers.
ANSI	American National Standard Institute.
MSS	Manufacturers Standardization Society of the Valve and Fitting Industry.
NACE	National Association of Corrosion Engineers.
B.S.I.	British Standards Institution.
	Other design standards available upon request.
DIN	Deutsches Institut für Normung.
AWWA	American Water Works Association.



## Spare parts. maintenance and after-sales service

Ringo Válvulas guarantees the manufacturing and supply of the necessary spare parts for the safe start-up and commissioning of the plants. We can provide after-sales service, full maintenance of manual valves and the complete diagnosis of motorized valves. Also, by request of Plant Engineering Departments we study and implement design changes, updates and modifications to the existing valves design.

## Our materials selection

We can supply our valves in all type of materials for each particular service conditions

- Carbon Steel for General Use
- Carbon Steel for Low Temperature
- Alloy Steel for High Temperature
- Martensitic Steel
- Stainless Steel Corrosion Resistant
- Duplex & Superduplex Stainless Steel
- Nickel Base Alloys
- Special Materials

## Our customers around the world





# RINGO VALVULAS

## *Driving Energy*

Polígono Empresarial  
c/ Romero, 6  
50720 Zaragoza (Spain)  
Tel. +34 976 45 49 40  
Fax. +34 976 45 48 40

ringo@ringospain.com  
www.ringospain.com



N



NPT



API 6A-0729  
Licence Nr. 6A-0729



API 6D-0495  
Licence Nr. 6D-0495



API 6DSS-0038  
Licence Nr. 6DSS-0038



ISO 9001:2008 by LRQA



ISO 14001 by LRQA



OHSAS 18001 by LRQA

